

Community Members Interested (COMMITTED) is a tax-exempt non-profit organization registered in the US under section 501-(C)(3) of the US IRS Code, and COMMITTED-Nepal is an approved non-governmental organization (NGO) under Social Welfare Council (SWC) regulations of the Government of Nepal. In unison COMMITTED strives to ensure free quality education to children in communities we serve as part of our Sikchya Mero Adhikar (Education-My Right) campaign. COMMITTED collaborates with communities--through a comprehensive community planning process--to set up Social Business for Education (SBE) projects and establish education governance. In addition to financing education of the children, SBE projects also finance community development projects, address livelihood issues and foster awareness of, and consideration for, the conservation and sustainability of natural resources and environment.

January 01, 2014 - December 31, 2014

COMMITTED- US	
Income	Amount (\$)
Corporate Donation:	
Give Back America LLC	19.00
Network for Good	1,082.00
Nepal ko Yuwa	971.00
Add Accured Income	581.50
Sherpa Collection	526.00
Individual Donation	5,195.47
Total Income in 2014	8,374.97
Expense	
Nepal Project Expense	16,855.00
Project Monitoring Expense	6,000.00
Postage	3.72
Registration & Renewal	75.00
Bank Fees	271.52
Paypal Fees	139.47
Refreshment Expense	6.20
Total Expense in 2014	23,350.91

July 16, 2014- July 16, 2015

COMMITTED NEPAL		
INCOME	NPR	US\$
Grants		
COMMITTED US- Education is Freedom	491,300.00	4,828.98
NEMIRA	617,186.83	6,066.31
Himalayan Bank Ltd.	150,000.00	1,474.35
The Asia Foundation	1,314,000.00	12,915.27
AVAAZ	8,127,000.00	79,880.09
Disaster Relief Fund	1,046,309.18	10,284.15
Individuals & Corporates	824,510.35	8,104.09
Interest Earned	70,049.14	688.51
TOTAL INCOME	12,640,355.50	124,241.75
EXPENSES		
ADMINISTRATIVE/ OP EXPENSE (NOT COVERED BY PROJECTS)		
Salary	385,500.00	3,789.07
Rent	49,000.00	481.62
Utilities	21,012.00	206.53
Communication/Newspaper/Internet	47,549.00	467.36
Meeting Expenses	2,871.00	28.22
Legal & Fees	52,174.62	512.82
Repair/ Maintenance	4,935.00	48.51
Local Transportation	4,510.00	44.33
Supplies & Refreshments	87,614.00	861.16
Miscellaneous	15,245.00	149.84
SUB TOTAL	670,410.62	6,589.45
PROJECT EXPENSES		
SIP: Education is Freedom	606,159.00	5,957.92
SIP: Scholarship Program	77,494.00	761.69
SIP: Manahari Library Improvement	5,428.00	53.35
SIP: Chilaune Playground Construction	324,010.00	3,184.69
SBE: Community Fishery Thangpalkot	1,879,240.44	18,471.01
Disaster Relief Activities	3,978,908.56	39,108.60
SUB TOTAL	6,871,240.00	67,537.25
TOTAL EXPENSES	7,541,650.62	74,126.70

Note: Financial Activities reported for COMMITTED U.S. and COMMITTED-Nepal are for two different time frames due to varying legal accounting periods.



Dear COMMITTED Supporters,

It gives me great pleasure to report this annual report to you. The country has faced many challenges in 2014-2015, especially the major earthquake in April and May of 2015, and through this report you will hopefully acknowledge our perseverance in helping the communities we serve. The earthquake has greatly affected Sindhupalchowk, where COMMITTED is active the most. Along with the rest of the country, COMMITTED is striving to assist in rebuilding many parts of Sindhupalchowk.

During the first three quarters of the 2014-15 period, COMMITTED was resolved to complete many of its initiated activities, the most significant being the fishery as a social business project. Having built a fishery enterprise for schools in Thangpalkot VDC, we were thrilled to witness the participation of the local community in establishing their own private fish farms. New toilets, rainwater harvesting systems, new school structures, active recreation facilities - many activities had just been completed and some were just being initiated. Although many were seriously affected by the earthquake, all has not been lost. Together with the communities we serve and our partners, we will build better schools and the communities around them.

As a part of the earthquake rebuilding strategy, the District Education Office-Sindhupalchowk District has assigned COMMITTED as one of its partners to help rebuild schools in Thangpalkot VDC. Immediate to the earthquake I also visited the village and had the opportunity to live their tented lives as the tremors continued day after day while our families also were under threat in Kathmandu. We were among the few organizations that responded with basic disaster response needs such as shelter, food, blankets, medical supplies, and even solar based cellular phone charging system for all the wards of Thangpalkot VDC and beyond. Even government security personnel were able to make use of our established system. We are further proud that our approach to response was not just specific to sporadic households or a single ward at a time, but the entire community (VDC), ensuring the distribution benefitted each and every household.

Our priority has always been education of children and the communities living around these schools. Because the children were vulnerable to exploitation during these times of distress and out of the school structure, in partnership with government security forces, COMMITTED built temporary learning centers for the schools and also assisted in conducting classes. We believe over the past few months we took the right measures and our response has made a formidable impact. There is still much work to be done, including rebuilding of new schools and getting our projects back on track. And when we do this, we aim to build schools bigger, better, and the communities stronger. We understand this will be a challenge but I am very convinced that with your support we will go a long way.

Sincerely,

Jayjeev Hada
 Founder/Chairperson—COMMITTED U.S.
 Founder/Executive Director-COMMITTED Nepal

	COMMITTED U.S.	COMMITTED Nepal
Founder	Jayjeev Hada	
Chairperson	Jayjeev Hada	Dinesh L. Shrestha
Vice-chairperson	Atulya Dhungana	Sanjeev Hada
General Secretary	Ritima Pradhan	Ritima Pradhan
Treasurer	Johana Shah	Dhruba M. Pradhan
Member	-	Rajasudan Pradhan
Member	-	Subina Shrestha
Member	-	Kabita Lissanevitch

Our Focus

COMMITTED's focus are in the areas of Education and Poverty Reduction under the following campaign:

Sikchya Mero Adhikar (Education-My Right) - We believe that education is a basic human right of all children and that it should be free and of quality. Under this umbrella COMMITTED is implementing its two programs—School Improvement Program (SIP) and the Social Business for Education and Community Development (SBECD) program. SIP seeks to provide quality education with infrastructure and other curriculum and management related improvements. The SBE program seeks to provide sustainability for schools so as to eliminate school fees imposed on the children. COMMITTED collaborates with communities--through a comprehensive community planning process--to set up SBECD projects. In addition to financing education of the children, SBE projects also finance community development projects, address livelihood issues and foster awareness of, and consideration for, the conservation and sustainability of natural resources and environment. In 2015-16 we hope to add a Local Governance and Service Delivery (LGSD) component to our other two components. The LGSD will be initiated with school and local government related governance activities.

Board of Directors

In 2014-15 the board membership changed. A new Treasurer is now on board and also two new Board Members were added. As a strategy to include diverse and proactive people on board, the two new regular Board Members are women, making our Board now comprised of three female members.

Administration

We now have a competent new Administration and Finance Officer– Mr. Drabin Pradhan on board to handle much of all organizational administrative matters and Ms. Sayam Moktan for all communications and development matters. Both candidates were hired through a rigorous selection process. The need for their critical role was much felt during the post disaster period when communication and managing funds and expenses were key to responding to the disaster.

Website

Although our website has been functioning well, since the onset of the earthquake, activities have increased rapidly and also our need to respond to queries and reporting, we have realized our website to be static and were unable to report timely due to its structure. In 2015-16 we will be revamping the website to make it more user friendly in terms of reporting with the inclusion of social media at prominent webpage locations.

Earthquake Report – Relief and Response

On 25th April 2015, a 7.8 magnitude devastating earthquake struck Nepal. It was hailed as the worst natural disaster to strike Nepal since the 1934 Nepal-Bihar earthquake. Nepal was not prepared to cope with a disaster of this scale. Fourteen of Nepal’s 75 districts were struck the hardest in the earthquake causing extensive damage. To make matters worse, a major aftershock shook the country on May 12th. The total death toll from both the earthquakes for the entire nation has surpassed 8,900 with scores of others injured. Sindupalchok District suffered the highest human loss with the death toll there reaching 3,839. In Thangpalkot VDC of Sindupalchok, where COMMITTED has been assisting with school improvement activities since 2009, the death count was 45 which included 11 students and 2 teachers.

COMMITTED was one of the first outside agency to reach Thangpalkot on May 4 with the emergency relief material. The area had suffered severe devastation due to the earthquake. To enable people to cope with the situation, COMMITTED team distributed immediate relief material across 778 households covering Wards 1-9 in Thangpalkot V.D.C. The relief material included tarpaulin sheets, blankets, food, medical supplies, and solar panel chargers. Relief material was also provided in Baruwa and Phulpingkot VDC. COMMITTED was successful in distributing relief material across Wards 3-9 in Baruwa V.D.C. Solar panel chargers were provided and installed to resolve the communication problem at Thangpalkot and Phulpingkot. These solar panels will be handed over to the schools after the schools are rebuilt.

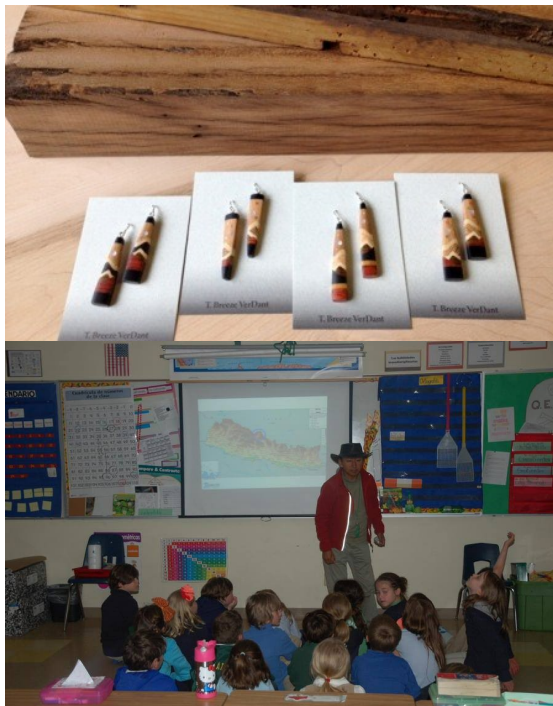


CMI Relief - Fundraising Efforts

The unexpected earthquake took a big toll on us as an organization. The office remained closed for one week with coordination being carried out by mobile phones. All of our previous work was brought to a standstill including the Social Business for Education and Community Development. The schools that we had been supporting were in rubble. Nevertheless, we were determined to get back on our feet. We emphasized on our fundraising efforts and reached out to friends all over the world through social media and other forms of communication. Our team who were tirelessly engaged in the disaster response at the project sites (communities, schools) sent updates and pictures which were put up through social media.

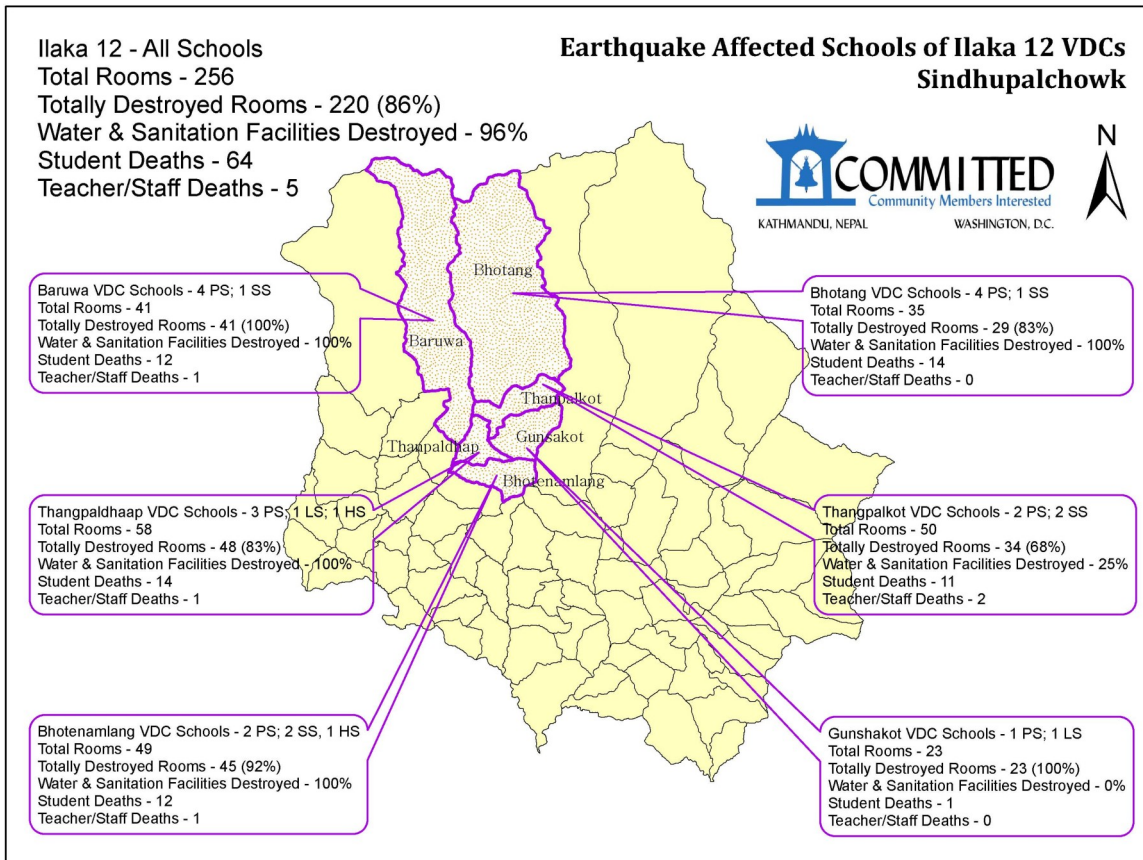


COMMITTED's friends and supporters also volunteered in the disaster response and relief efforts. Although, the road networks, weather conditions and the continuing aftershocks were not in favor, our team and our volunteers carried on with the relief work effectively. People from all walks of life came together with COMMITTED. Funds were raised through concerts (Slovenia—Etnobeat Music Society and Ljubljana Puppet Theatre) talk programs (Dorje Gurung), handicraft sale (Breeze Verdant), and charity dinner. Children of Main Street School, New York and Irvington Middle School also raised funds for the rebuilding work. COMMITTED's Education Program Director—Dorje Gurung has been in the United States since March 2015 speaking at various schools and community gatherings with the intent to raise awareness of Nepal's plight in the education sector, the earthquake, as well as raise funds for its school reconstruction efforts. Funds were also raised through grant proposals.



Education in Emergency

All four schools supported by COMMITTED - Shree Raithane Secondary, Shree Chilaune Secondary, Shree Taltuleshwori Primary, and Shree Satkanya Primary faced substantial devastation due to the disaster. Majority of the school structures and buildings were severely damaged. Sixty eight percent of class rooms (34 out of 50) and twenty four percent of water and sanitation facilities were completely damaged.



All school operations were disrupted due to the earthquake and because the school structures including the class-rooms and other critical facilities were destroyed, the children and the teachers were hesitant to return to classrooms. Because, creating a conducive environment for the children to return to the classrooms was very critical, Temporary Learning Centres (TLCs) were constructed for the four schools. The TLCs were established with bamboo frames and CGI sheets. They were set up with the help of COMMITTED’s volunteers, local village community, school staff, the Nepal Army, and the Armed Police Force.



Recreational Activities in the TLCs

Recreational activities such as music, art, and sports can prove therapeutic in relieving the trauma faced by children and teachers during the post earthquake period. To ease their minds and to boost their morale, recreational programs were conducted for the students. A music teacher was hired to conduct five hour music sessions per day, teaching the students the basics of musical instruments at the TLCs of Shree Raithane and Chilaune Secondary School.

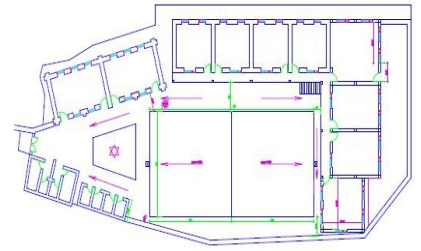


Sports activities such as basketball, football and volleyball were also conducted for students in the four schools. For continuation of sports activities, sport kits were provided to the four schools which included sets of indoor and outdoor games. Stationery kits included notebooks, story books, pens, crayons, coloring books, origami sets and white boards for the teachers were also provided to the schools. Providing mid-day meals proved to encourage children to return to the classes.



School Improvement Program at Raithane Secondary School

The Raithane Secondary School has seen major improvements in its infrastructures over the years . Although all improvements were carried out according to plan, the earthquake has caused major devastation. In addition to the collapsed building that has buried the science lab, the library, computer lab and classrooms in the rubble, it also destroyed the latest addition to these school- toilets, rainwater harvesting and water supply system. The earthquake has damaged these structures to some extent, this newly built facility can still be brought into functional conditions with minor repair. The newly built building has been damaged significantly, but repairable. The multi-purpose court with basketball and tennis court is still in usable condition.



Community Fishery Scale Up at Thangpalkot VDC

The planned community fishery scale up has been put on hold due to the earthquake devastations. The two nurseries were partially damaged but will be repaired in due time as funds become available or from income generated from the fishery itself. In 2014-15 the fishery program at Thangpalkot VDC of Sindhupalchowk was our major focus. A fish nursery and production sites at various locations were built. Among the few potential sites considered, a site adjacent to the school was selected and a two fish nursery ponds were also built. The land is leased for ten years and is located in a swampy area, securing water availability all year round. Along with the community fishery to benefit the school community, willing local farmers were also trained to adopt fish farming as a livelihood opportunity. The training is enabling the farmers to jump to cash crop based farming. The fish nursery supplies fingerlings to individual farmers interested in fishery in their private farms. Surplus fingerlings are stocked in the community pond for production. Income from the production pond and the sale of fingerlings are being used to meet deficient operational costs for the Raithane School. This community fish farm will also be used as a training to center to not only train the farmers but also adolescent school going children as a life skill learning course with certification.



The people involved in the fishery committee are also investing approximately Rs.100,000 towards the fishery operations.

A critical component of the project is the inclusion of a farmers' market, in which local farmers including the fish farmers will be allowed to put up stalls twice a week to sell their produce. Through advertisement of the market-place (Haatbazaar) in the local radio and other outlets, it will not only help sell the local produce including the fish, but also help vitalize the local economy. The 'haatbazaar' venue has been built but activities not conducted yet because of the earthquake. When in operation, the market will be managed by the VDC, thereby assisting the local body with additional resources. Such a 'haatbazaar' will be the first of its kind in the entire Sindhupalchowk District. A fish farmers' group will also be established to link the locally harvested fish with the nearby towns and market places, and also to establish linkages and support from the government agencies associated with fish farming. This haatbazaar facility provided considerable relief to the community as it served as a shelter to many families including the security personnel deployed during the post disaster stage.





2015-16 Concepts

School Reconstruction and Education

A major effort will be diverted towards the rebuilding of three schools of Thangpalkot VDC. There are many unanswered questions including the geological stability of the school grounds, merging of two schools in the area, level of assistance available from the government, and the government regulations regarding the structural and design requirements of the new school buildings in the post earthquake stage. Despite these uncertainties, it is known that COMMITTED has been designated as one of two NGOs assigned with the critical task of rebuilding the school back in Thangpalkot VDC and get schools back in normal operations.

In addition to reconstruction of schools we will also seek to rebuild all facilities lost such as the libraries, science labs, computer labs, and also further strengthen the Star Reader and Writer Program to ensure all children from Thangpalkot VDC are competent readers and writers by the time they finish secondary school.

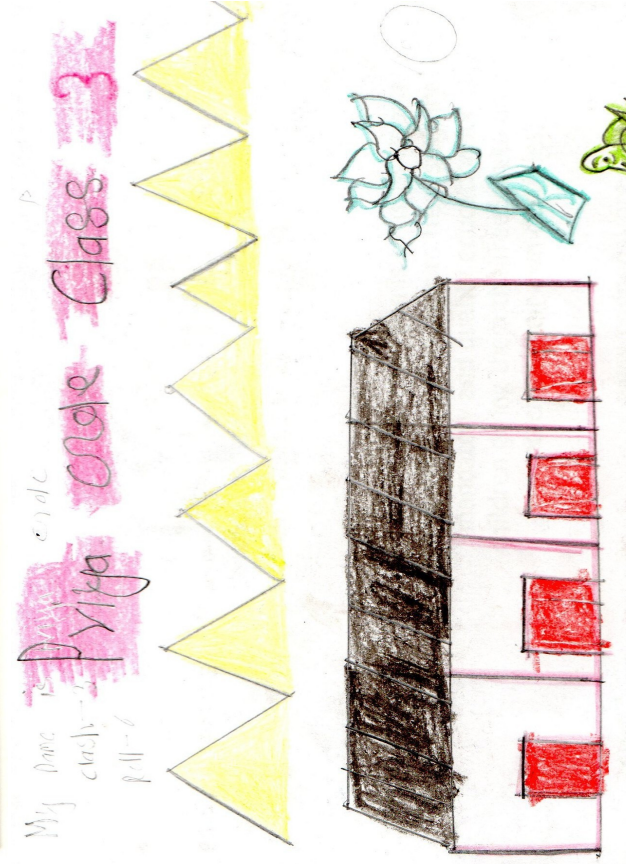
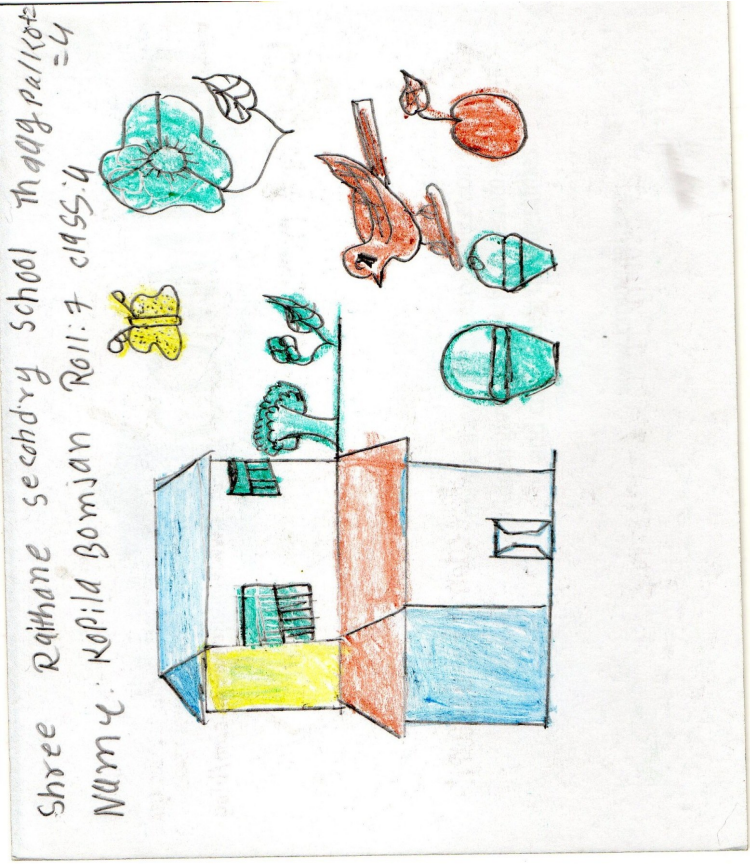
Fishery Expansion

In addition to fixing the fishery infrastructure damages, the entire operation will be rekindled if funds are made available. The concept is to raise awareness regarding the need to jump to cash crop based farming among community farmers and the assist them in making the jump with technical and other necessary resources. The fish nursery and the two schools that have adopted fisheries to generate income will be provided support to improve their operations. In addition, other schools in the area will also be encouraged and supported to adopt fishery or other similar approaches for sustainable income.

Local Governance and Participatory Planning

Because there are many issues in school governance, mostly with mismatch in resource utilization, false data reporting, and incompetence in managing schools and their development, COMMITTED is seeking to initiate a school governance related program in which the Village Education Committee is strengthened in which the VEC members, DEO Resource Persons, school managers and other civil society members are all brought under a single umbrella to participate in the planning and management of all schools within the local jurisdiction. At this venue school data validation, planning, and development of schools will be sorted. This will not only streamline all education related activities, but also make adequate use of valuable resources provide by the DEO such as the Resource Person who is assigned to build capacity of school teachers and administrators as well as serve as a critical link between the government and public schools. Currently, the resource persons are too stretched to utilize their expertise.

Impressions of Thangpalkot Village



House