

COMMUNITY MEMBERS INTERESTED (COMMITTED) is a tax-exempt non-profit organization under section 501-(C)(3) of the IRS Code and an NGO registered with the Social Welfare Council (SWC) of Nepal.

COMMITTED's primary goal is to *provide health, safety, and welfare to communities in Nepal* by implementing projects pertaining to *education, poverty, health, and the environment.*

COMMITTED Nepal — Report of Financial Activities  
As of December 31, 2011

<b>Income</b>	<b>NRs</b>	<b>US\$</b>
Corporate Contributions	714,926.00	9,165.72
Dutch WASH Alliance	29,000.00	371.79
<b>Total Income</b>	<b>743,926.00</b>	<b>9,537.51</b>
<b>Expense</b>		
Admin	218,220.62	2,797.70
Purchase	52,122.00	668.23
Rent	64,400.00	825.64
Telephone	14,840.52	190.26
Electricity	4,130.00	52.95
Refreshment	21,845.00	280.06
Project Expense (SIP/SBE/WASH)	978,940.00	12,550.51
<b>Total Expense</b>	<b>1,354,498.14</b>	<b>17,365.36</b>

COMMITTED U.S. — Report of Financial Activities  
As of December 31, 2011

<b>Income</b>	<b>US\$</b>
Corporate Contributions	3,000.00
Individual Contributions	4,153.00
Fund Raising Sales	4,846.00
Dividends	0.29
<b>Total Income</b>	<b>11,999.29</b>
<b>Expense</b>	
Raithane School Expansion Project	10,200.00
Business Registration Fees	55.00
Fund Raising Expense	481.41
Printing and Copying	60.00
Supplies	138.34
Web Hosting	70.26
Service Charges	104.00
Annual Meeting	139.87
<b>Total Expense</b>	<b>11,248.88</b>



Dear COMMITTED Supporters,

As a result of your continued support, significant number of children and their families in Nepal are receiving care in some form and they thank you for your generosity. Our efforts are now better streamlined and our accomplishments more meaningful. In 2011, we focused entirely on rural needs.

Early on from 2011 we raised funds and coordinated with different bodies to establish Sri Raithane School as a Higher Secondary School with the addition of grades 11 and 12. Early 2012, we will be taking a group of volunteers to build a library and a science lab. NCELL, Nepal's leading Cell Phone company has verbally pledged to use COMMITTED as its face for its Corporate Social Responsibility (CSR) in four of Nepal's Districts. In addition, it has also pledged to assist Raithane School with a computer lab using HelpNepal as its official implementing partner.

Towards the end of 2011 we carried out the ground work, including site visits and meetings with stakeholders, for our program "Social Business for Education" (SBE) as a part of COMMITTED's Sikchya Mero Adhikar (Education-My Right Campaign). The program is directed towards assisting financially strapped families improve their household income as well as reduce school drop-outs. We believe education is a basic right for all children and financial burden should not be the cause of illiteracy in Nepal. As desired, we were unable to start off Fishery as a Social Business in 2011. Although the planning process was initiated and the stakeholders brought to terms with the nature of the social business, the first harvest of the existing fish will be carried out only towards mid June, 2012. Income generated from the fishery will be utilized towards making infrastructure improvements to the school, meeting deficient costs for the higher secondary school operations, and reducing financial burden on vulnerable school going children. Along with the fishery we also seek to initiate pig farming as a social business around the same time frame. This group will be required to run the farm as a collective social business and convert the enterprise to a legally established cooperative.

Our long effort towards being a part of the Nepal Water, Sanitation, and Hygiene (WASH) Alliance (NWA) has become a reality. COMMITTED-Nepal is now one of the fifteen members of the NWA, funded by the Dutch Government and in 2011 we participated in a rainwater harvesting project to identify water stressed villages of Kanchanpur village. In 2012, we will install five RWH systems in Lipna Village, considered the most water stressed village of Kanchanpur District.

As we continue to make headway with the Social Business for Education Program as well as WASH and the School Improvement Programs in vulnerable areas of Nepal, I urge you to continue to foster our partnership and help improve lives of Nepali people living in unrepresented communities.

Sincerely,

Jayjeev Hada  
 Founder/Chairperson—COMMITTED U.S.  
 Founder/Executive Director—COMMITTED Nepal

	COMMITTED U.S.	COMMITTED Nepal
Founder	Jayjeev Hada	
Chairperson	Jayjeev Hada	Dinesh L. Shrestha
Vice-chairperson	Atulya Dhungana	Sanjeev Hada
General Secretary	Ritima Pradhan	Ritima Pradhan
Treasurer	Johana Shah	Rajasudan Pradhan
Coordinator	-	Surekha P. Limbu
Member	-	Sanjay Gorkhali
Member	-	Sachin Shrestha

## Administrative

### *Board of Directors*

In 2011 board membership has remained intact. The U.S. Chairperson relocated to Nepal and has assumed the role of Executive Director since 2010. Increasing diversity and getting individuals passionate to COMMITTED's cause continues to be an ongoing exercise.

### *Website & Social Network*

Our new website is up and running. The website reflects our increased activities. Although site content updates are not as timely as desired, a monthly update is being carried out. We aim to make updates on a weekly basis in the immediate future. The new website is user friendly and is based on Content Management System (CMS). The website includes interesting new features such as a press release section and videos of past and ongoing projects. We are currently on facebook as a COMMITTED group and a Community Members Interested (COMMITTED) page. With the help of a newly recruited volunteer we hope to make frequent updates to our pages and also add a Tumbler page, another popular social networking site that also serves as a blog. With increase in activities and funding, we hope to hire a paid staff to manage our website and the social network sites.

**Fund Raising**

With lessons learnt from the past years, we have found small scale fund raiser events to be much effective. As a result, in 2011 our strategy was to conduct fund raisers on a smaller scale but increase in frequency. As a result we met our target goal during the ANA 2012 Convention. In addition, many grant applications are expected to be submitted in 2012. These applications will primarily be sent to INGOs, foreign embassies participating in local development efforts, grant making foundations, philanthropic individuals, private businesses, and local/international clubs and associations.

**Partnerships & Recognition**

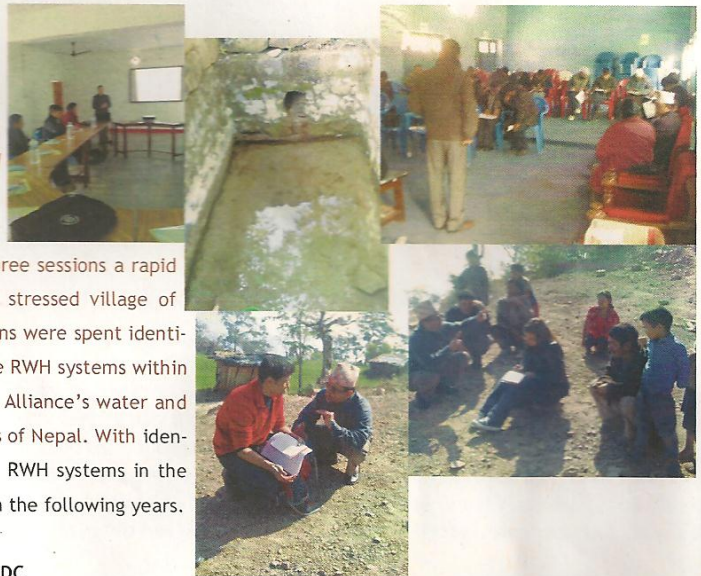
**Nepal WASH Alliance** - COMMITTED-Nepal continues to be a part of a 15-member Water, Sanitation & Hygiene (WASH) for Nepal (NWA). The alliance is being funded by the Dutch Government and is comprised of powerhouse NGOs currently involved in WASH activities. NWA will carry out WASH programs in the far-west and mid-far-west regions of Nepal. COMMITTED-Nepal recently, in collaboration with Rainwater Harvesting Capacity Center (RHCC) carried out a five pilot systems in Lipna Village, along the Churey Hills of Kanchanpur District.

**Save the Children, Nepal** - COMMITTED-Nepal continues to partner with Save the Children (SC), Nepal for its Adopt-A-School program. The understanding document states that SC and COMMITTED-Nepal will work together to improve lives of school children in a collaborative manner to assist in attaining the Education Millennium Development Goal by 2015. As a part of the Adopt A School program, COMMITTED was recently chosen to carry out school improvements in four districts—Syangja, Kaski, Kathmandu (Kirtipur), & Chitwan.

**2011 Projects**

**Rainwater Harvesting at Kanchanpur District**

With funding provided from RAIN Foundation, Netherlands, and in partnership with BSP-Nepal carried out the three-day program - *Build Awareness of Rainwater Harvesting (RWH) as an Integral Component of Integrated Water Resource Management (IWRM) in Kanchanpur District of Nepal* between January 18-January 20, 2012. During all three sessions a rapid water stress survey was conducted and identified the most water stressed village of Kanchanpur District. Subsequent days following the interaction sessions were spent identifying visiting installation sites for a pilot demonstration project of five RWH systems within the district. The project was carried out as a part of the Nepal Wash Alliance's water and sanitation related intervention in the mid-farwest and farwest regions of Nepal. With identification of the most water stressed area, the goal is to install five RWH systems in the village within 2012 and further expand to other areas of the district in the following years.



**Classroom Furniture at Taltuleswori Primary School, Thangpalkot VDC**

In 2011, COMMITTED helped Taltuleswori Primary School of Thangpalkot District with new furniture to serve all classrooms as a part of COMMITTED's School Improvement Program. The furniture is a much sought improvement from the floor seating the children previously were accustomed to.

**Art on the Road, Thangpalkot VDC**

COMMITTED and Waters from Heaven, a volunteer group comprised of members from South Africa, Hongkong, South Korea, United Kingdom, and the United States conducted Art on the Road at four different schools in the Thangpalkot area. The group covered four schools and roughly 700 children in seven days.



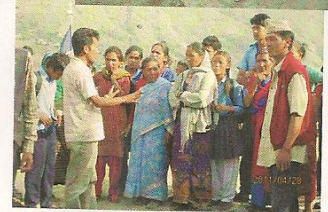
**Social Business for Education (SBE) at Sri Raithane Secondary School—2011 Programs**

Starting 2011, COMMITTED initiated the SBE Program with a view to not only establish social businesses for financially strapped families but also provide educational opportunities to the children of these households. Such a comprehensive approach ensures that household income is uplifted and children are allowed to complete school. We believe that education is a basic right of all children and that illiteracy as a result of financial constraints should not be a reason for a child to falter in life. In 2012, as a part of the SBE we have initiated fishery and pig farming as social businesses, but are still in the planning and initial phases. In 2011, a goat farming social business at the household level has been implemented and is currently in the monitoring phases. Two female goats were handed off to the household members. Raised goats are expected to be sold off in the market improving the beneficiaries' household income. The SBE program seeks to implement two parallel components, which are the following:

1. A scholarship program for children from financially struggling families; and
2. An income generating self-sustainable social business as a cooperative for the families that benefit from the scholarship program.

The need based scholarship program and the income generation assistance is not a simple giveaway but tied to three conditions, which are the following:

- a. The children will continue to attend school until graduation;
- b. The children will never be subject to household chores during study time at school and home; and
- c. The social business group will ascertain establishment of a cooperative within a year and start functioning as a self sustainable business beginning year 2013.



**PROJECTS FOR 2012**

**Pig Farming as a Social Business for Education (SBE) (2011-12)**

The pig farming project at Sri Raithane Secondary School was initiated in November 2011. The project is a part of the SBE program and is scheduled to be established as a cooperative by the end of 2012. The selected children under this program are guaranteed support until SLC completion and their household members receive income generation support with conditions. COMMITTED is leading the effort with assistance in getting the infrastructure ready, power and water needs, land lease, purchase of ten piglets, and basic fodder. The social business members are required to assist in getting the infrastructure ready, take turns to collect waste food from nearby eateries, prepare feed, ensure pig hygiene and farm, and overall operation maintenance of the social business.

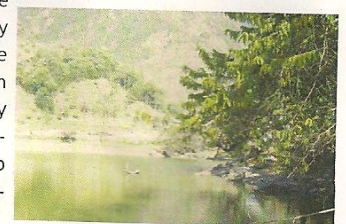
**Higher Secondary School Establishment at Sri Raithane Secondary School, Thangpalkot VDC, Sindhupalchowk District (2011-12)**

Under the Sikhya Mero Adhikar (Education-My Right): School Improvement Program, COMMITTED has been conducting various activities at Sri Raithane School. Over the years we realized need for a higher secondary school (10+2) in this VDC. The need is based on geographical and economical hurdles faced by the general population of Thangpalkot and surrounding VDCs. The nearest higher secondary school is located approximately 2-3 hours' walk from Thangpalkot. The nearest sub urban area, Melanchi, requires approximately three hours of bus-ride. However, these local bus rides through treacherous earthen roads are closed during monsoon. COMMITTED seeks to establish a higher secondary school at Sri Raithane. In 2011, the project required construction of two classrooms, library, science lab, computer lab, and computer literacy program. Although the concept was initiated in 2011, a library was recently built and the science lab and computer lab will be built in September 2012.



**Aquaculture as a Social Business for Education**

With local opportunities and resources available at Thangpalkot Village, the SBE program is initiating an aquaculture (fishery) as a social business to establish education as a basic right for the children of Thangpalkot and Gunshakot VDCs. Generated income from the fishery will be utilized to meet deficient funds for school operations for one secondary school and three primary schools in the area. This means that the children attending these schools will not be required to make up for the deficient expenses by way of paying nominal fees. By relieving households from the financial burden, their children can finish school and savings could be used towards critical food security, health, and household needs. This fishery will be operated by the community as a cooperative and employ household members from financially strapped families. During the initial implementation period, the children of employed households will be provided scholarship until free education is established to the entire school. Initiated in 2011, the project, with approval from all concerned parties, now is preparing to conduct the first harvest of the existing fish in the pond in September 2012.



**Rainwater Harvesting at Kanchanpur District (Pilot)**

Five rainwater harvesting systems are scheduled to be implemented in Lipna Village of Kanchanpur District, along the Churey Hills. Lipna is a highly water stressed village that relies entirely on a trickling natural water source collection tank (Rautey). Water is available in the Rautey only a few months in a year. The villagers will be relieved from carrying water vessels over two hours of walking from nearby streams across Dadeldhura District during the dry season.