

1215 Fox Run Place
Woodbridge, VA 22191

ANNUAL REPORT—2007

2007 SUPPORTERS

Recurring Monthly Commitments	Other Contributors	Other Contributors
Edina & Sadeep Shrestha	Anna Zielinska	Pragya & Kiran Sitoula
Himashree and Pravin Rana	Arun Banskota	Pratibha & Siddharth Upreti
Johanna Shah	Aruna Satyal	Pushpa & Saroj Bhattarai
Mela and Neeraj Shrestha	Bindeswori & Sanjay Shah	Rabina Banmali
Pratistha & Nischal Shrestha	Brighu Shah	Ritesh Shrestha
Pragya & Perry Joshi	Christina & Diwas Adhikari	Sabina & Sunu KC
Reema & Lokesh Rajbhandari	Laila & Surhid Gautam	Sanju & Raju Malakar
Ritima Pradhan & Jayjeev Hada	Lalita & Chintamani Lamichhane	Saroj & Krishna Prajapati
Ritesh Shrestha	Magan & Nani Shrestha	Sheila & Prabodh Shrestha
Shama & Sameer Khakurel	Meera & Bhagat Lal Shrestha	Sujita & Sushil Bogati
Sandeep Puri	Michael Mezzina	Sukeshina Joshi
Sujita and Sushil Bogati	Neeva & Rajesh Pradhan	Susan Hellman
	Pradyumna Rana	Tejashwi & Anil Rauniyar
		Teresa Maloney

1215 Fox Run Place, Woodbridge, VA 22191 | Tel: (703) 945-7258 | admin@cmiNepal.org

400/41 Kamaladi Sadak, P.O. Box 2547, Kathmandu, Nepal | Tel: 425-9759 | admin.nepal@cmiNepal.org



Dear COMMITTED Supporters,

Thank you for your continued support over the past year. As a result, significant number of children and their families in Nepal are receiving care in some form and they thank you for your generosity. Our primary focus for the past year was rehabilitation of Kanya Mandir School, the first girls' school of Nepal. Once a prominent affluent school serving girls of all class and race, now mainly serves the underprivileged girls of Kathmandu. Following up on the needs assessment survey conducted in 2006, we started 2007 with the intent of implementing a few of the highly prioritized projects. We started the first half of 2007 with writing a grant application to the Rotary International to renovate the students and staff toilets, provide drinking water supply facility, build infirmary, and conduct health awareness programs. The grant was approved late December of 2007. These projects are currently being coordinated for implementation.

During the second half of 2007, we began renovation of the computer lab with funds made available by primarily kind U.S. based Nepali individuals and concurrently submitted a grant request to the Western Union Foundation to purchase the equipment necessary for the project. This grant request was approved late December of 2007. Our Nepal staff has purchased and completed computer installations.

In 2007, in partnership with Himalayan Helpline (HH), another emerging non-profit organization, we attempted to serve the people of Nepali origin residing in the U.S. in the areas of health and social needs. Many Nepali immigrant arrive at the ports to begin a new life but find themselves lost over the years as a result of financial constraints and lack of education, awareness, and communication skills. We carried on with HH's efforts brought on by our new board members including the Nepali language and culture awareness projects for U.S. residents (DC Nepali School). The Nepali language and culture preservation program is a success story and has been in existence for the past few years.

I would like to thank our supporters, board members, advisors, numerous volunteers and especially our team in Nepal that not only implemented but also helped acquire the grant money. I hope you will join me in strengthening our ties to be a part of the ongoing efforts to rebuild Nepal in which health, safety, and welfare of needy Nepali population are addressed. On behalf of COMMITTED's staff and Board Members, I thank you and hope for your continued support to help build better Nepali communities.

Sincerely,

Jayjeev Hada

Founder/Vice-chairperson

VISIONS AND CHALLENGES

COMMUNITY MEMBERS INTERESTED (COMMITTED) is a non-profit organization and is tax-exempt under section 501-(C)(3) of the IRS Code. Founded by Jayjeev Hada in 2004, COMMITTED's primary goal is to provide health, safety, and welfare to communities in Nepal and the U.S. by formulating and implementing comprehensive community plans with active citizen participation. The plan components include projects pertaining to land use, poverty alleviation, health, and public facilities.

COMMITTED's success depends mainly on the ability to acquire grants and raise funds for worthy projects. Overall, creative fund raising and a firmer administrative grip continue to pose challenges and Nepal's political instability continues to be a concern.

Administrative Changes

One of the highlights of 2007 was the expansion of our services. In addition to providing services to communities in Nepal, we also sought to help Nepalese immigrant communities in the U.S. A ., for which, we added key members of the Himalayan Helpline (HH) group, a newly emerging non-profit organization, to our board. The new board of directors assumed their positions starting July 1st, 2007: Neeva Pradhan as the chairperson, Anita Tuladhar as the General Secretary, Pushpa Bhattarai as the Treasurer, and Eric Moe and Dr. Arthur Hayashi as members. For efficient operations the office location was also moved to 8803 Sandy Ridge Court, Fairfax. After a year's trial with the new location, we experienced numerous issues relating to administrative tasks. As a result, in March of 2008 the office location was reverted back to the previous location: 1215 Fox Run Place, Woodbridge, VA 22191. Changes in the current board membership is expected in 2008-2009.

Fund Raising

COMMITTED's future depends on successful fund raising campaigns and acquiring grants for specific projects. In early 2007, we submitted a grant application through our Nepal office to the Western Union Foundation to implement the Kanya Mandir Computer Literacy Project. The application was approved and the project is currently being implemented. A second grant application for renovation of toilet facilities, drinking

water system, infirmary, and health related awareness programs was submitted to the Rotary Club in late 2006 and has been approved. Our staff in Nepal are currently coordinating with the local Rotary chapter of Kathmandu to implement the project. In 2007, we continued to collect contributions via online banking and credit card methods to generate regular monthly subscriptions. Regular cash flow from this type of contribution has made it possible to support project operations in Nepal. Much of the contributions received are credited to our efficient implementation record. Aggressive fund raising campaigns are necessary to implement more meaningful projects. As we move ahead in 2008-2009, we will rely primarily on acquiring grants and in-kind contributions from various sources to implement much needed projects.

Growth & Recognition

As we work towards acquiring significant grant funding for much needed projects, our goal is also to broaden stakeholderhip by including significant friends of Nepal to join our organization and help us achieve our goals. To accomplish this we created two important bodies to our organization: 1.) An advisory board comprised of persons with technical background and knowledge to provide guidance and assist us in implementing various projects; and 2.) An honorary board comprised of persons who have contributed to the Nepali society and wish to help us advance our goals. In 2007, significant number of leading scientists from the health and science industries have joined COMMITTED as advisors. Their input is bound to produce positive effect in all of COMMITTED's activities. In 2008 we seek to add more members to the advisory as well as an honorary board groups. COMMITTED is honored to welcome Mr. Samrat Upadhyay (author-Arresting God in Kathmandu, Guru of Love, and the Royal Ghosts) and Mr. Matthew Handley, who fought the litigation case on behalf of the families of 12 Nepali men slain in Iraq, to our honorary board. In addition to the recognition and faith placed on us by our patrons, honorary board members, and advisory board members, we were also recognized by Kanya Mandir School for our efforts to help educate underprivileged girls of Nepal.



CURRENT PROJECTS: Kanya Mandir Rehabilitation

Kanya Mandir is an all girls' higher secondary school located in Nheokha Tole, Kathmandu. COMMITTED and the school's management committee are working together to revive Kanya Mandir's glorious history. The school's performance excelled immediate to its inception in 1948 and lasted the first four decades. Over the last two decades, the school's standard of education as well as its physical infrastructure has deteriorated and is now in need of rehabilitation. We have completed a needs assessment survey. The survey results reflect the immediate and long term needs of the school. Survey analysis and results are available on our web site.

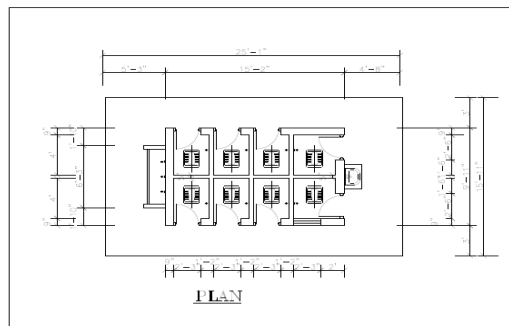
Computer Lab Room Renovation

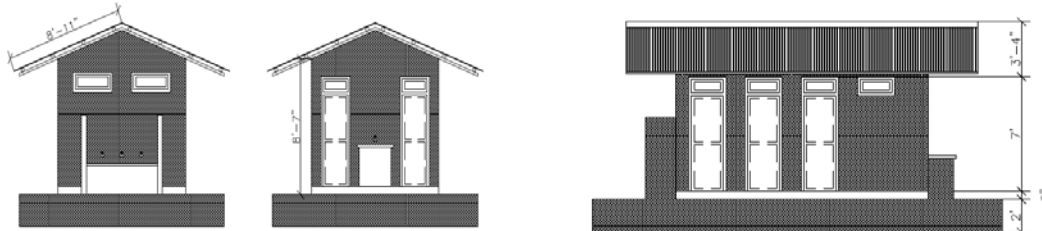
As part of the Computer Literacy Project for Kanya Mandir, the computer lab room was relocated to the 1st floor and substantial improvements were made in 2007 including electrical lines, painting, and purchase and installation of ceiling fans and furniture. With lab room ready with renovations, the computers were recently purchased and installed (See Right Pictures).



Health & Sanitation Improvement

Toilet renovation, water supply, and health awareness programs and infirmary project is currently being implemented with financial help from the Rotary Club. Prepared plan and elevation for the toilets are shown below.





ELEVATION

ELEVATION

Himalayan Helpline Initiative

In an effort to better characterize the Nepalese community in the Washington, D.C. Metro Area, a community survey was conducted between February 2007 and July 2007. Following a discussion with Nepali community leaders on the survey design, surveys were handed out by members of the Nepalese community with the intended purpose of creating a public health intervention for this community based on areas of need, shown through the survey. In order to create an effective intervention, the Community Oriented Primary Care model, a six-step process in which health interventions are performed, is being used. An IRB exempt form, dealing with research on human participants, has been completed in order to officially collect this survey data as a part of a specific non-profit organization. The community survey, an initiation of The Himalayan Helpline (HH) (a non-profit group created in late 2006 to help the Nepalese community, particularly Nepalese immigrants, in the United States) was conducted as a project under COMMITTED. The survey is the first characterization for the community which HH hopes to serve.

FUTURE PROJECT CONSIDERATIONS

We welcome your input, suggestions, and kind advice to help us achieve our goals. In addition to projects mentioned above we are in constant consultation with our patrons to formulate future projects. While formulation of future project plans are ongoing processes, a few of the following few projects are being considered for implementation in the near future:

- Health & Environment— Health Centre Needs Assistance, Sexually Transmitted Intervention Awareness; Head and Neck Cancer Research; Construction Material and Fugitive Dust Research
- Poverty Alleviation — I Micro Credit Programs
- Public Facilities—Library, Bus Service, Extra Curricular Facilities for Kanya Mandir School; Pedestrian Sidewalk Improvements

TREASURER’S REPORT

Nepal Projects & Core Operations	
Income	
Contributions	4,702.47
Total Income	4,702.47
Expense	
Project Contributions (Kanya Mandir School)	2,500.00
Office Supplies	54.43
Webhosting	75.35
Fund Raising	19.90
Postage	91.06
Service Charge	37.00
Registration Renewal	55.00
Total Expense	3,080.74
Net Fund as of December 31, 2007	1,621.73

DC Nepali School	
Income	
Contributions	7,871.66
Total Income	7,871.66
Expense	
Contract Service	1,432.00
Facilities and Equipment rental	750.00
Supplies	2,419.25
Miscellaneous	250.00
Total Expense	4,851.25
Net Fund as of December 31, 2007	3,020.41