



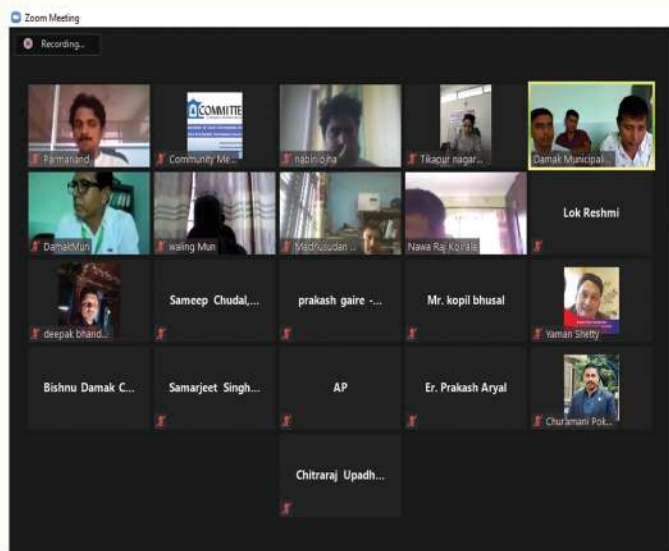
Cover Photo: Buckwheat Field, Chitwan District | Cover Photo Credit: Ayush Jung Thapa - COMMITTED

THIS QUARTER HIGHLIGHTS

Sharing on Revenue Practice of Damak Municipality

COMMITTED organized a three day virtual Zoom meeting on 'Sharing Revenue Practice of Damak Municipality' from 9th to 11th June, 2020. Due to the outbreak of COVID-19 and extended nationwide lockdown, the workshop was conducted through Zoom app since physical meetings were not possible.

Because of the amendment in Local Government Operation Act 2074, collection of integrated property tax was prohibited, therefore local governments were allowed to collect Land and Property Tax as separate revenue items. Hence, the major objective of the workshop was to share on how Damak Municipality has been exercising



their Land and Property Tax collection and its tax structure changes.

The workshop was conducted with other three partner municipalities - Tansen, Waling and Tikapur. Each municipality, apart from Damak, also shared their revenue collection methods and record keeping system. This program was a great learning and sharing platform for all the participating municipalities.

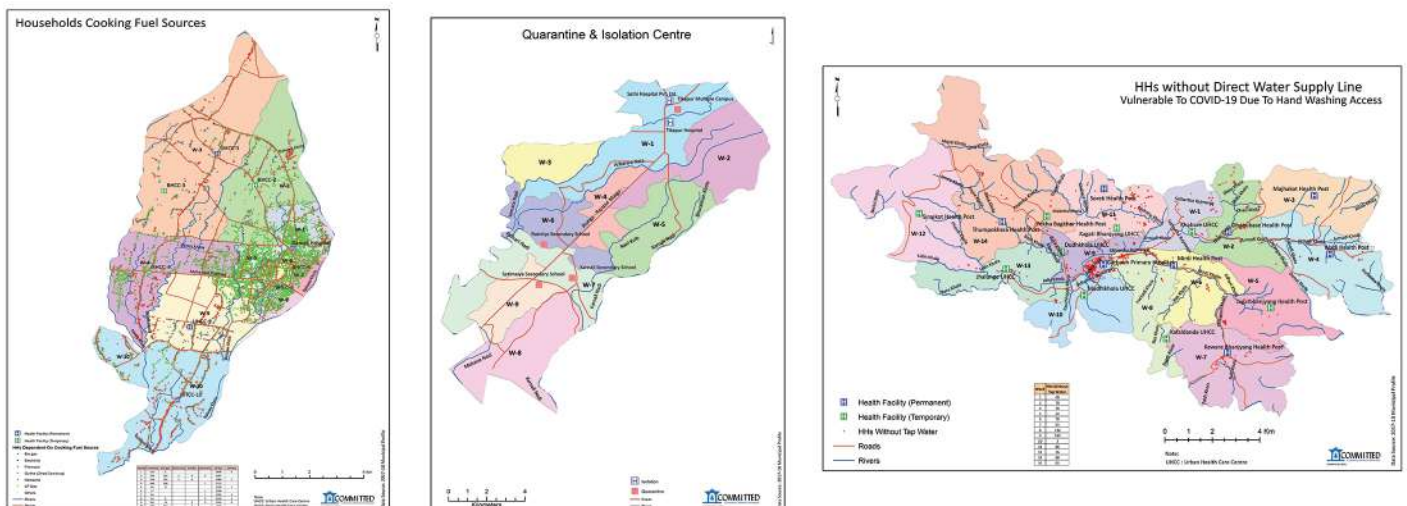
COVID-19 Preparedness Maps of Five Working Municipalities

With Coronavirus disease being the global health emergency and its increasing confirmed cases in Nepal, COMMITTED assisted local governments by creating COVID-19 Preparedness Maps. The maps were produced in order to help municipalities respond in areas that are greatly vulnerable to COVID-19 and to help local authorities implement programs that mitigates the risk of transmission of the disease.

The preparedness maps included:

1. Map regarding current Isolation wards and quarantine centers that helps municipality address the need of such centers in COVID prone areas. This map will also help general public to know the location of the available quarantine and isolation centers.
2. Critical food and medical supply stores to figure out the number of households that have difficulty in access to such essential stores due to restricted movement and lockdown.
3. Household whose sole source of income is daily wage and are in immediate need of relief materials because of extended nationwide lockdown and unemployment.
4. Households with single women and differently abled people as they are in need of relief materials.
5. Households with their cooking fuel source as most of the households uses Liquefied Petroleum (LP) gas for cooking which could be difficult to acquire due to lockdown and travel restrictions.
6. Household without direct water supply making access to handwashing limited. Proper handwashing is considered to be the first line of defense to control the transmission of COVID-19.
7. Households with Elderly Persons as older people are considered to be at greater risk of Coronavirus disease due to various underlying health conditions.
8. Households with patients of Chronic illness such as Cardiovascular diseases (Hypertension, Heart Attack), Chronic Respiratory Diseases (Asthma, Lung Diseases, Pneumonia), Diabetes and Cancer. Patients of such long term diseases are considered vulnerable to COVID-19.

COMMITTED created preparedness maps of five municipalities namely Damak, Bhimeshwar, Tansen, Waling and Tikapur. We have been collaborating with these municipalities through our ongoing project 'Enhancement of Local Government Service Delivery & Economic Governance (EnLoG-SDEG)'. The data used in the maps are generated from Municipal Profiles developed with technical assistance from COMMITTED.



Orientation on Municipal Information Management System

Due to advanced growth in technology, the world is significantly moving towards keeping the needed data in digital forms. Undoubtedly, digital forms of data are extremely useful towards maximizing available resources and optimizing their operations. It is even more expedient to manage database for municipalities where data are collected and recorded in huge numbers each day.

Therefore, in the month of June, COMMITTED oriented Waling, Tansen, Tikapur and Damak municipalities on Municipal Information Management System (MIMS). Key objectives were to aware municipalities on how database management system works, its advantages and the steps towards making municipality digital and smart. Municipal Information Management System is very useful and reliable system that supports municipality in proper resource management, organized service delivery, disaster management, effective planning and decision-making process.

Household and institutional related data required for the development of MIMS were collected, with COMMITTED's assistance, two years back for the making of Municipal Profile. Data collected for the development of Municipal Profile will now be digitalized and could be easily accessed by both municipal officials and the general public.

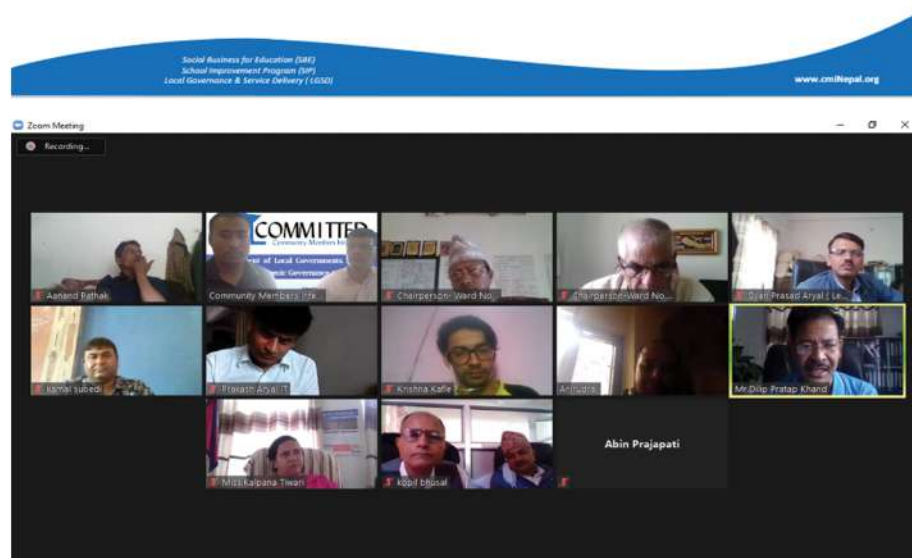
Development of Municipal Information Management System is one of third phase activities of our ongoing EnLoG-SDEG project.



Municipal Information Management System

“नगर सूचना व्यवस्थापन प्रणाली”

दिगो विकासका लागि | For Sustainable Development



Role of Subjective Committees in PFM with Focus on Gender Responsive Budgeting

On June 30, COMMITTED organized a session on Role of Subjective Committees in Public Finance Management (PFM) with Focus on Gender Responsive Budgeting. This session was conducted among the coordinators of subjective committees and the Deputy Mayor- Ms. Kalpana Tiwari of Waling municipality.

The municipalities of Nepal consist of subjective committees for various sectors such as 'Economic Development', 'Social Development', 'Infrastructure Development', 'Forest, Environment and Disaster Management', and 'Institutional Development and Governance'. Therefore, the focal objective of the discussion session was to orient municipality on basic responsibilities of these subjective committees, their roles in sectoral implementation, and how the committee should function in Public Finance Management and Gender Responsive Budgeting. The session also included discussion on the available revenue generation source, how municipality can further bolster their revenue generation, execute their development needs and attain their priorities.

The session also covered discussion on the importance of Gender Responsive Budgeting (GRB) in municipality's budget cycle management including budget development, its implementation, monitoring and evaluation. GRB is crucial to ensure that each citizen is equally benefitting by the development achieved by the municipality. It makes sure that issues of each gender, socially and physically disadvantaged groups, vulnerable groups are addressed and their inclusion is ensured.

